

Summary	Census 2010	2019	2024
Population	5,829	5,900	5,829
Households	2,203	2,261	2,246
Families	1,693	1,698	1,677
Average Household Size	2.61	2.58	2.56
Owner Occupied Housing Units	1,715	1,911	1,912
Renter Occupied Housing Units	488	350	334
Median Age	37.8	39.6	40.1
Trends: 2019 - 2024 Annual Rate	Area	State	National
Population	-0.24%	-0.03%	0.77%
Households	-0.13%	-0.01%	0.75%
Families	-0.25%	-0.12%	0.68%
Owner HHs	0.01%	0.22%	0.92%
Median Household Income	1.73%	2.52%	2.70%

Households by Income	2019		2024	
	Number	Percent	Number	Percent
<\$15,000	118	5.2%	109	4.9%
\$15,000 - \$24,999	146	6.5%	136	6.1%
\$25,000 - \$34,999	122	5.4%	105	4.7%
\$35,000 - \$49,999	267	11.8%	235	10.5%
\$50,000 - \$74,999	486	21.5%	451	20.1%
\$75,000 - \$99,999	309	13.7%	291	13.0%
\$100,000 - \$149,999	491	21.7%	511	22.8%
\$150,000 - \$199,999	118	5.2%	151	6.7%
\$200,000+	204	9.0%	255	11.4%
Median Household Income	\$74,365		\$81,010	
Average Household Income	\$98,500		\$111,955	
Per Capita Income	\$38,277		\$43,698	

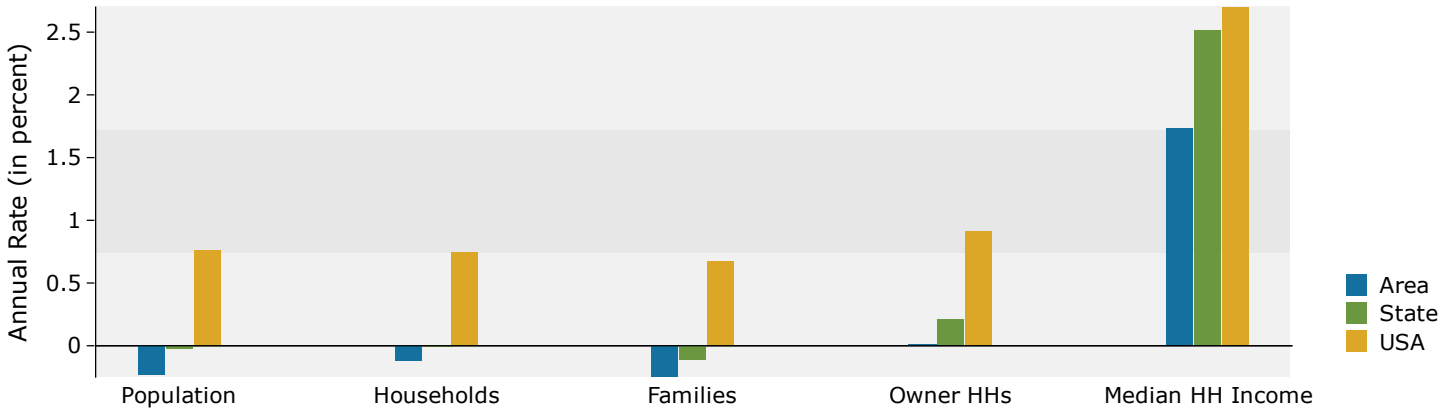
Population by Age	Census 2010		2019		2024	
	Number	Percent	Number	Percent	Number	Percent
0 - 4	411	7.1%	383	6.5%	375	6.4%
5 - 9	461	7.9%	390	6.6%	374	6.4%
10 - 14	471	8.1%	402	6.8%	397	6.8%
15 - 19	440	7.5%	381	6.5%	365	6.3%
20 - 24	225	3.9%	273	4.6%	246	4.2%
25 - 34	666	11.4%	758	12.9%	757	13.0%
35 - 44	830	14.2%	760	12.9%	763	13.1%
45 - 54	854	14.7%	700	11.9%	681	11.7%
55 - 64	715	12.3%	766	13.0%	689	11.8%
65 - 74	419	7.2%	624	10.6%	629	10.8%
75 - 84	226	3.9%	321	5.4%	402	6.9%
85+	111	1.9%	140	2.4%	151	2.6%

Race and Ethnicity	Census 2010		2019		2024	
	Number	Percent	Number	Percent	Number	Percent
White Alone	5,624	96.5%	5,635	95.5%	5,514	94.6%
Black Alone	42	0.7%	43	0.7%	47	0.8%
American Indian Alone	8	0.1%	10	0.2%	10	0.2%
Asian Alone	63	1.1%	66	1.1%	75	1.3%
Pacific Islander Alone	2	0.0%	4	0.1%	6	0.1%
Some Other Race Alone	12	0.2%	19	0.3%	24	0.4%
Two or More Races	78	1.3%	122	2.1%	152	2.6%
Hispanic Origin (Any Race)	80	1.4%	106	1.8%	130	2.2%

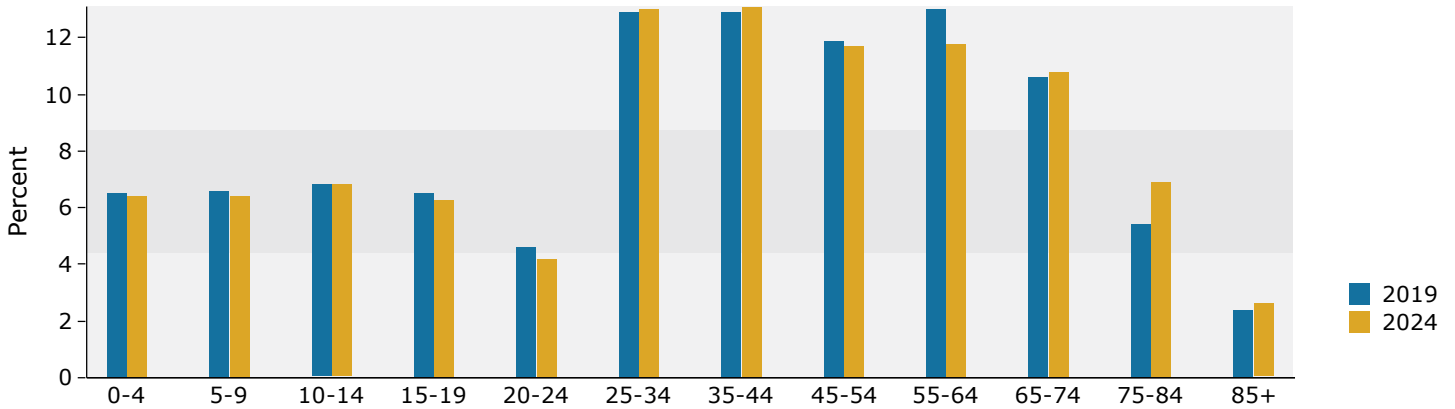
**Data Note:** Income is expressed in current dollars.

**Source:** U.S. Census Bureau, Census 2010 Summary File 1. Esri forecasts for 2019 and 2024.

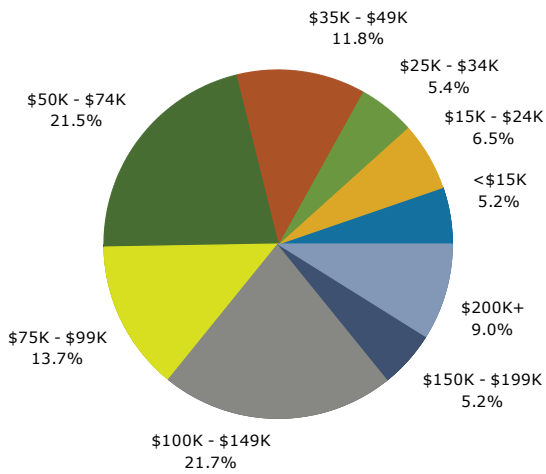
Trends 2019-2024



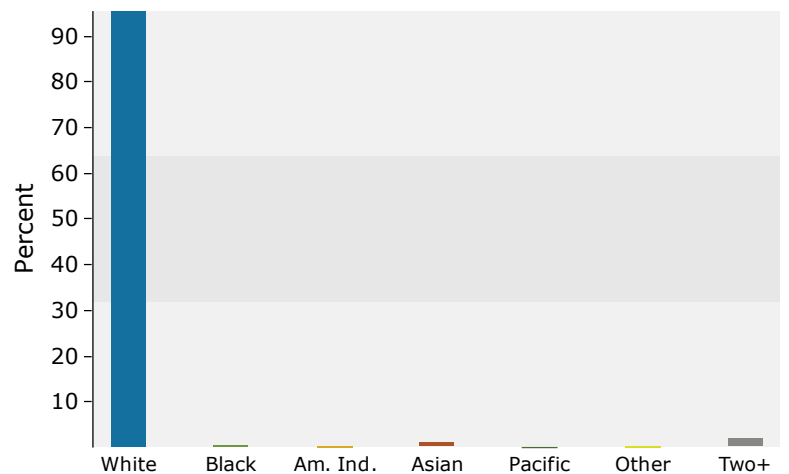
Population by Age



2019 Household Income



2019 Population by Race



2019 Percent Hispanic Origin: 1.8%

Source: U.S. Census Bureau, Census 2010 Summary File 1. Esri forecasts for 2019 and 2024.