



# Demographic and Income Profile

Mount Zion village, IL (1751206)  
 Mount Zion village, IL (1751206)  
 Geography: Place

Summary	Census 2010	Census 2020	2022	2027
Population	5,947	6,019	5,832	5,595
Households	2,214	2,322	2,272	2,201
Families	1,688	-	1,682	1,623
Average Household Size	2.65	2.56	2.54	2.51
Owner Occupied Housing Units	1,748	-	1,745	1,715
Renter Occupied Housing Units	466	-	526	486
Median Age	38.4	-	40.1	40.5

Trends: 2022-2027 Annual Rate	Area	State	National
Population	-0.83%	-0.28%	0.25%
Households	-0.63%	-0.14%	0.31%
Families	-0.71%	-0.20%	0.28%
Owner HHs	-0.35%	0.15%	0.53%
Median Household Income	3.28%	3.11%	3.12%

Households by Income	2022		2027	
	Number	Percent	Number	Percent
<\$15,000	94	4.1%	64	2.9%
\$15,000 - \$24,999	116	5.1%	84	3.8%
\$25,000 - \$34,999	153	6.7%	107	4.9%
\$35,000 - \$49,999	234	10.3%	156	7.1%
\$50,000 - \$74,999	387	17.0%	390	17.7%
\$75,000 - \$99,999	307	13.5%	286	13.0%
\$100,000 - \$149,999	585	25.8%	623	28.3%
\$150,000 - \$199,999	141	6.2%	185	8.4%
\$200,000+	254	11.2%	306	13.9%

Median Household Income	\$85,601	\$100,605
Average Household Income	\$113,309	\$132,223
Per Capita Income	\$46,183	\$54,296

Population by Age	Census 2010		2022		2027	
	Number	Percent	Number	Percent	Number	Percent
0 - 4	408	6.9%	369	6.3%	353	6.3%
5 - 9	458	7.7%	383	6.6%	356	6.4%
10 - 14	458	7.7%	385	6.6%	378	6.8%
15 - 19	438	7.4%	372	6.4%	334	6.0%
20 - 24	232	3.9%	260	4.5%	231	4.1%
25 - 34	687	11.6%	752	12.9%	720	12.9%
35 - 44	819	13.8%	761	13.0%	742	13.3%
45 - 54	838	14.1%	667	11.4%	653	11.7%
55 - 64	782	13.1%	753	12.9%	638	11.4%
65 - 74	466	7.8%	651	11.2%	625	11.2%
75 - 84	246	4.1%	345	5.9%	418	7.5%
85+	116	2.0%	135	2.3%	148	2.6%

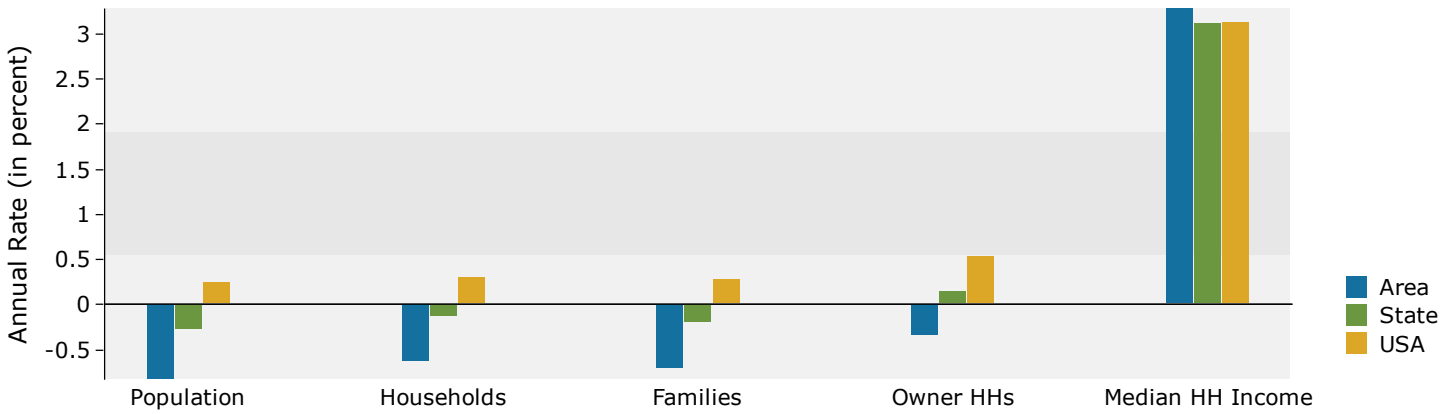
Race and Ethnicity	Census 2010		Census 2020		2022		2027	
	Number	Percent	Number	Percent	Number	Percent	Number	Percent
White Alone	5,749	96.7%	5,517	91.7%	5,378	92.2%	5,098	91.1%
Black Alone	35	0.6%	81	1.3%	54	0.9%	56	1.0%
American Indian Alone	9	0.2%	9	0.1%	9	0.2%	9	0.2%
Asian Alone	54	0.9%	106	1.8%	82	1.4%	87	1.6%
Pacific Islander Alone	2	0.0%	1	0.0%	1	0.0%	1	0.0%
Some Other Race Alone	13	0.2%	48	0.8%	46	0.8%	52	0.9%
Two or More Races	84	1.4%	257	4.3%	262	4.5%	291	5.2%
Hispanic Origin (Any Race)	75	1.3%	101	1.7%	94	1.6%	94	1.7%

**Data Note:** Income is expressed in current dollars.

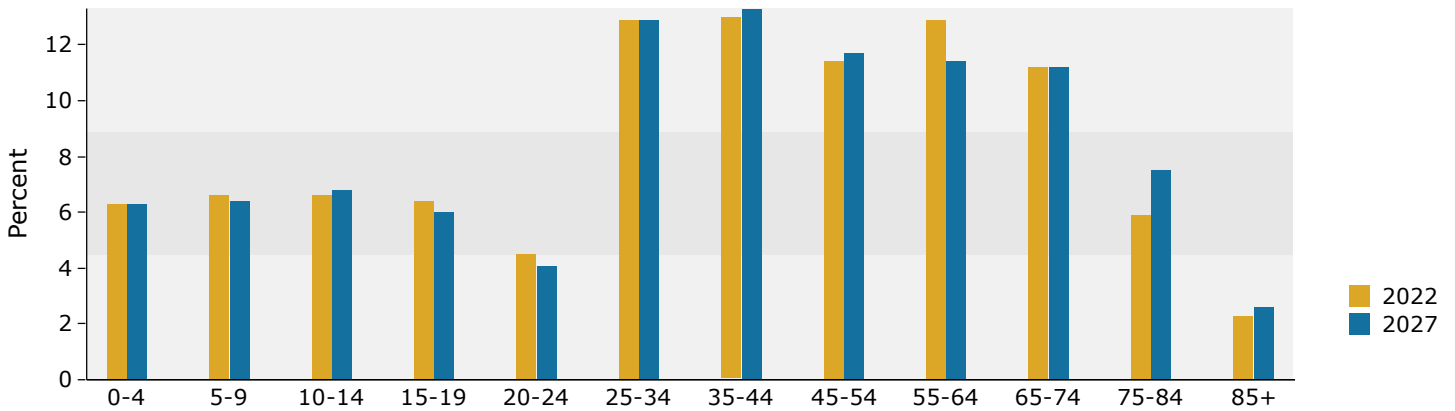
**Source:** Esri forecasts for 2022 and 2027. U.S. Census Bureau 2010 decennial Census data converted by Esri into 2020 geography.

Mount Zion village, IL (1751206)  
 Mount Zion village, IL (1751206)  
 Geography: Place

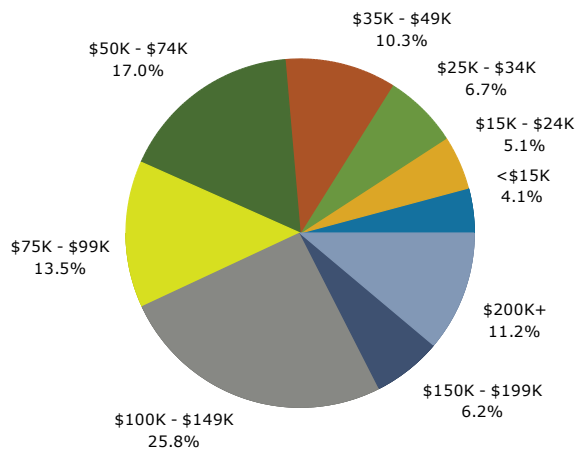
## Trends 2022-2027



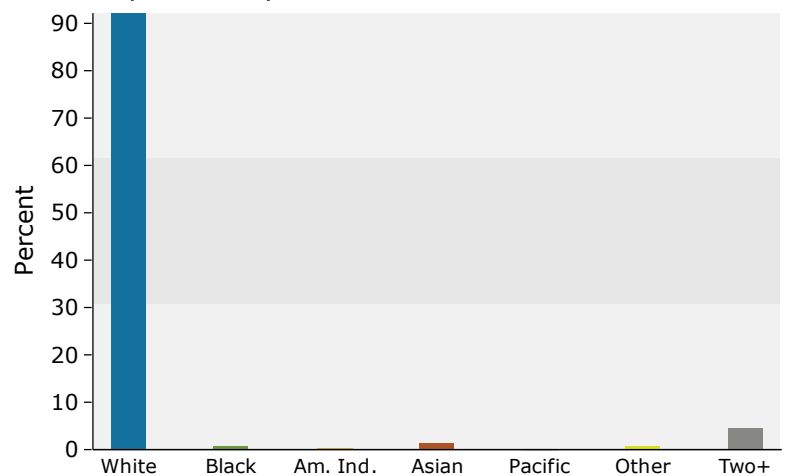
## Population by Age



## 2022 Household Income



## 2022 Population by Race



2022 Percent Hispanic Origin: 1.6%

Source: Esri forecasts for 2022 and 2027. U.S. Census Bureau 2010 decennial Census data converted by Esri into 2020 geography.