



Demographic and Income Profile

Forsyth village, IL (1727091)
 Forsyth village, IL (1727091)
 Geography: Place

Summary	Census 2010	Census 2020	2023	2028
Population	3,512	3,734	3,615	3,518
Households	1,308	1,382	1,356	1,335
Families	1,018	-	1,078	1,065
Average Household Size	2.67	2.65	2.62	2.58
Owner Occupied Housing Units	1,142	-	1,135	1,134
Renter Occupied Housing Units	167	-	221	201
Median Age	42.7	-	46.2	47.8

Trends: 2023-2028 Annual Rate	Area	State	National
Population	-0.54%	-0.19%	0.30%
Households	-0.31%	0.12%	0.49%
Families	-0.24%	0.05%	0.44%
Owner HHs	-0.02%	0.37%	0.66%
Median Household Income	3.05%	2.10%	2.57%

Households by Income	2023		2028	
	Number	Percent	Number	Percent
<\$15,000	53	3.9%	42	3.1%
\$15,000 - \$24,999	84	6.2%	59	4.4%
\$25,000 - \$34,999	107	7.9%	85	6.4%
\$35,000 - \$49,999	139	10.3%	120	9.0%
\$50,000 - \$74,999	176	13.0%	174	13.0%
\$75,000 - \$99,999	142	10.5%	124	9.3%
\$100,000 - \$149,999	217	16.0%	226	16.9%
\$150,000 - \$199,999	118	8.7%	123	9.2%
\$200,000+	320	23.6%	382	28.6%

Median Household Income	\$95,066	\$110,475
Average Household Income	\$142,914	\$168,358
Per Capita Income	\$53,629	\$63,911

Population by Age	Census 2010		2023		2028	
	Number	Percent	Number	Percent	Number	Percent
0 - 4	178	5.1%	168	4.6%	147	4.2%
5 - 9	284	8.1%	194	5.4%	192	5.5%
10 - 14	285	8.1%	227	6.3%	221	6.3%
15 - 19	236	6.7%	262	7.2%	192	5.5%
20 - 24	107	3.0%	176	4.9%	155	4.4%
25 - 34	297	8.5%	342	9.5%	356	10.1%
35 - 44	496	14.1%	389	10.8%	361	10.3%
45 - 54	567	16.1%	490	13.6%	478	13.6%
55 - 64	452	12.9%	560	15.5%	546	15.5%
65 - 74	320	9.1%	433	12.0%	462	13.1%
75 - 84	210	6.0%	264	7.3%	303	8.6%
85+	79	2.3%	110	3.0%	105	3.0%

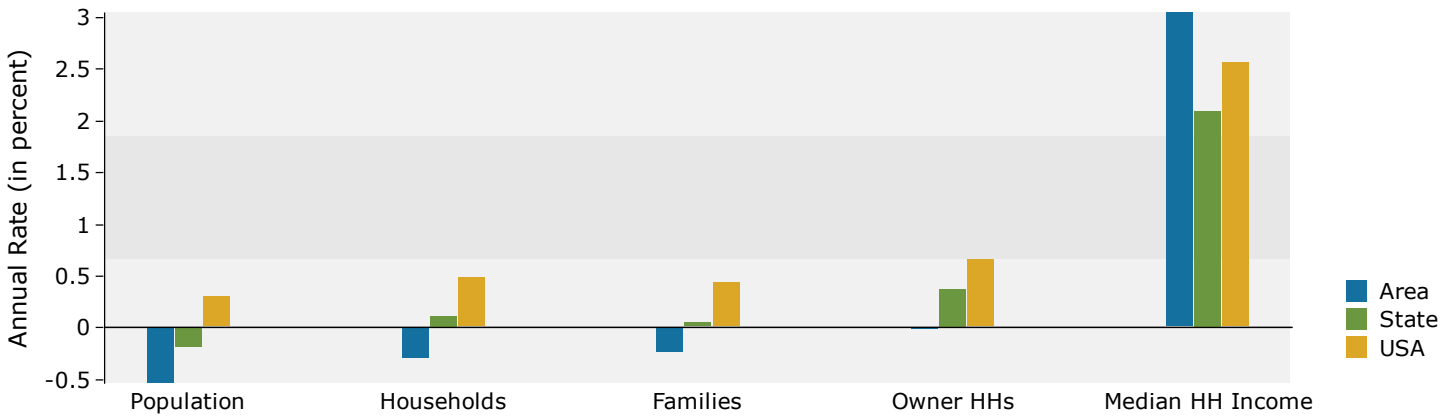
Race and Ethnicity	Census 2010		Census 2020		2023		2028	
	Number	Percent	Number	Percent	Number	Percent	Number	Percent
White Alone	3,127	89.0%	3,047	81.6%	2,945	81.5%	2,788	79.2%
Black Alone	104	3.0%	81	2.2%	91	2.5%	99	2.8%
American Indian Alone	6	0.2%	5	0.1%	4	0.1%	6	0.2%
Asian Alone	232	6.6%	408	10.9%	377	10.4%	411	11.7%
Pacific Islander Alone	0	0.0%	0	0.0%	0	0.0%	0	0.0%
Some Other Race Alone	12	0.3%	29	0.8%	29	0.8%	28	0.8%
Two or More Races	31	0.9%	164	4.4%	169	4.7%	186	5.3%
Hispanic Origin (Any Race)	60	1.7%	85	2.3%	80	2.2%	91	2.6%

Data Note: Income is expressed in current dollars.

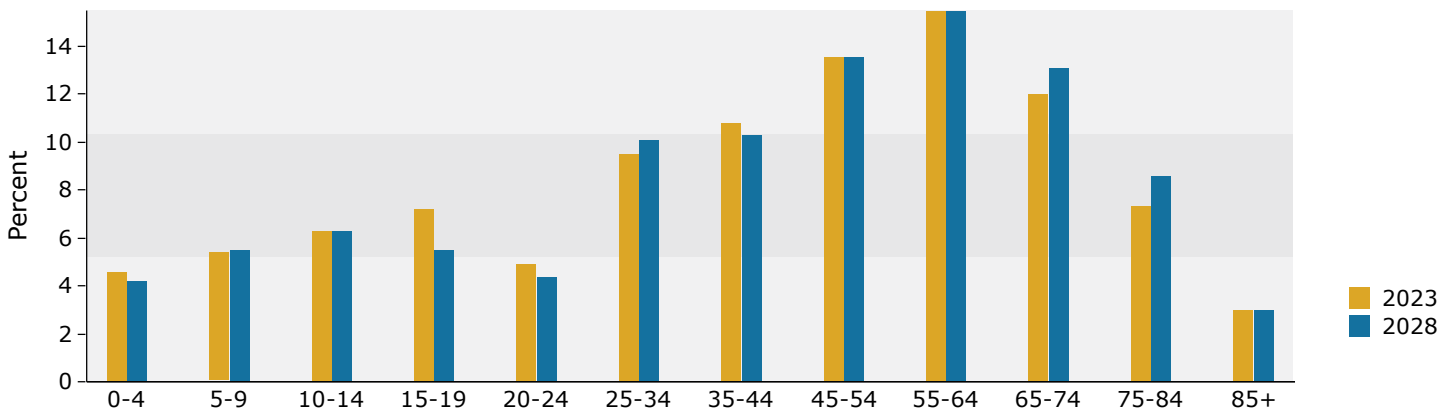
Source: Esri forecasts for 2023 and 2028. U.S. Census Bureau 2010 decennial Census data converted by Esri into 2020 geography.

Forsyth village, IL (1727091)
 Forsyth village, IL (1727091)
 Geography: Place

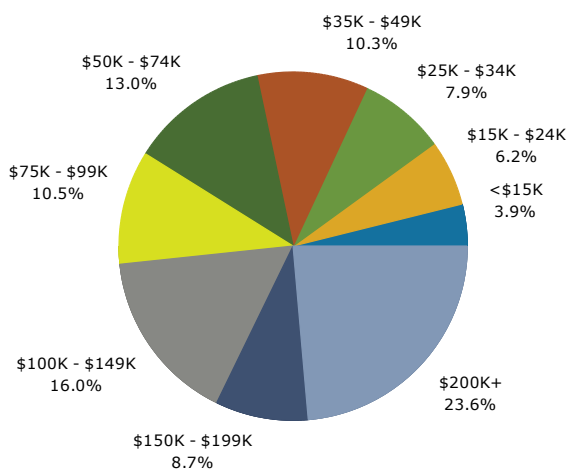
Trends 2023-2028



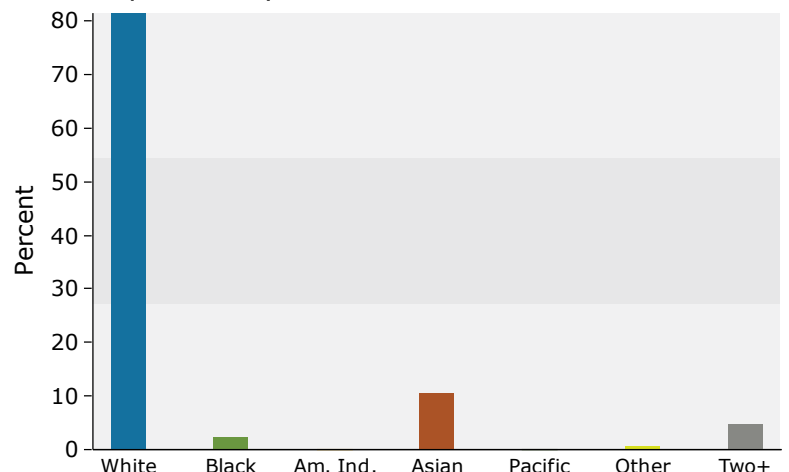
Population by Age



2023 Household Income



2023 Population by Race



2023 Percent Hispanic Origin: 2.2%

Source: Esri forecasts for 2023 and 2028. U.S. Census Bureau 2010 decennial Census data converted by Esri into 2020 geography.